

Montageanleitung für original:

Pullbloc® 3.1
Slidebloc® light 3.1



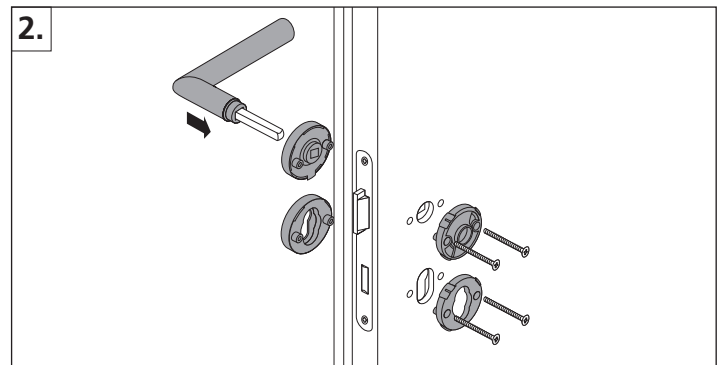
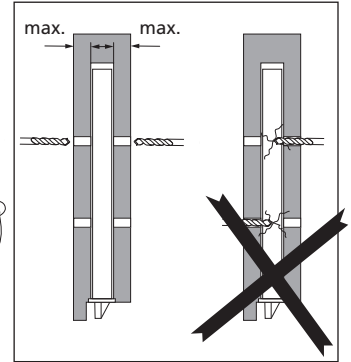
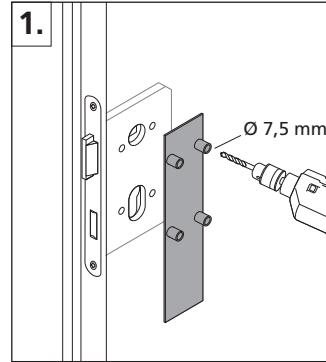
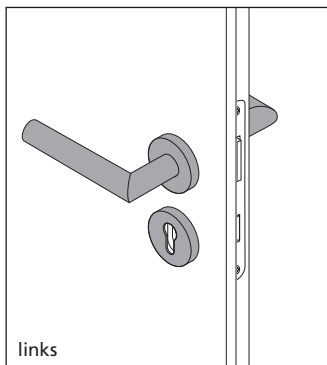
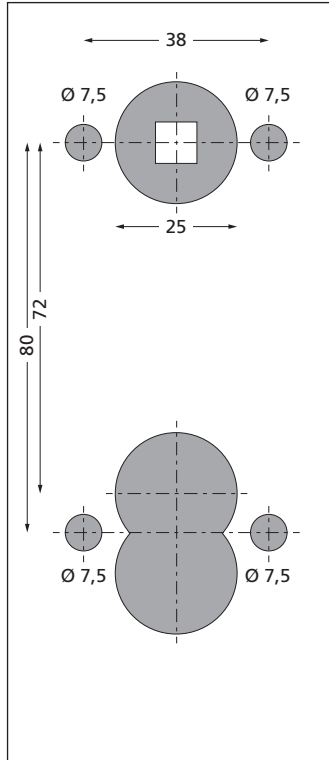
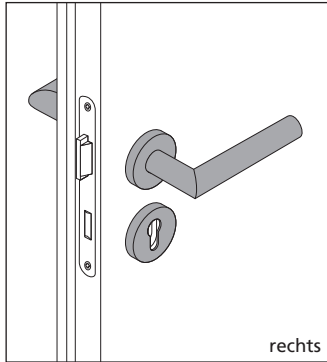
**Kugellager- und Gleitlagertechniken
Made in Germany!**

Montage nur von Fachpersonal durchführen lassen.

Zur fachgerechten Montage Bohrlehre verwenden. (scoop Artikel 000133).
Die Garnituren sind wartungsfrei, geprüft und zertifiziert.

1. Bohrlehre senkrecht ausrichten.
! Achtung ! Löcher \varnothing 7,5 mm von beiden Seiten präzise bohren.
Nicht durchbohren, ansonsten kann das Schloss beschädigt werden!

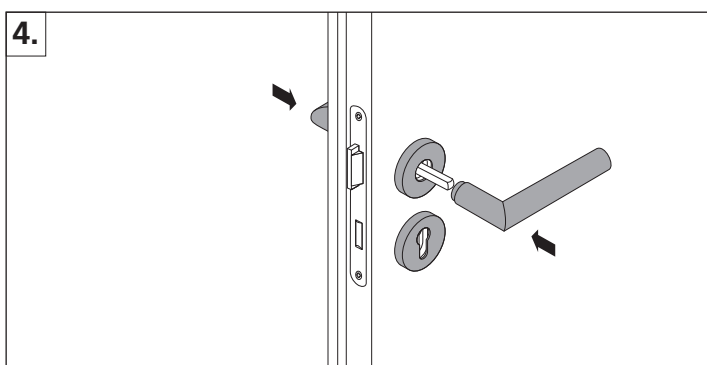
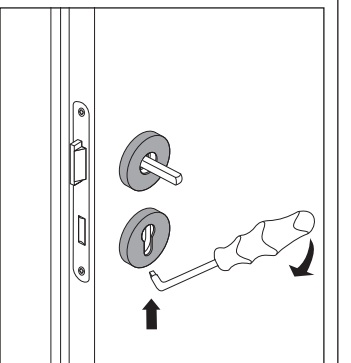
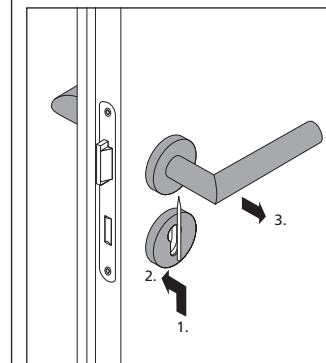
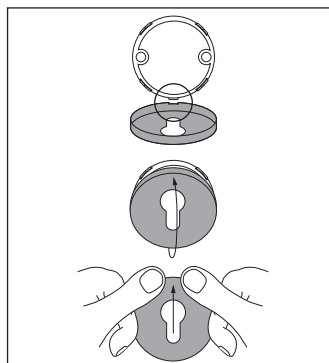
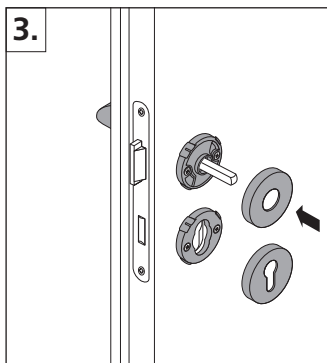
2. **! Achtung !** Bei Unterkonstruktionen LINKS und RECHTS beachten. Linke Unterkonstruktion in die Bohrungen pressen, Drücker mit Vierkant durch Unterkonstruktion und Schlossnuss schieben. Die rechte Unterkonstruktion über den Vierkant schieben und verschrauben.
! Achtung ! Bitte beachten Sie, dass nicht jeder Türtyp im Schlossbereich gleich stabil ist. Die Schrauben dem Türtyp entsprechend festschrauben.



3. **! Achtung ! Ganz wichtig!!**
Zuerst die Deckrosette aufklippen (Verdrehsicherung beachten!).

4. Erst danach den Drücker aufsetzen und von beiden Seiten zusammenpressen.

Zur Demontage mit beiliegendem Werkzeug von unten den Klemmmechanismus entriegeln und Drücker abziehen. Mit Hilfe eines Rosettenhebers die Deckrosetten von den Unterkonstruktionen abklippen.



Assembly instruction for original:

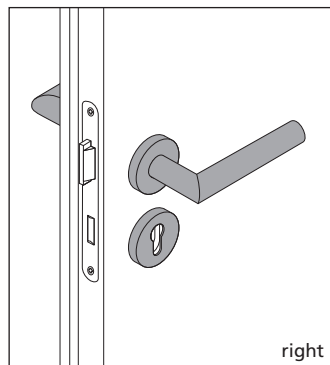
Pullbloc® 3.1
Slidebloc® light 3.1



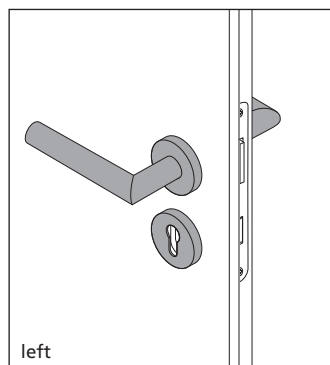
**Ball bearing- and slide bearing systems
Made in Germany!**

Assembly by professionals only!

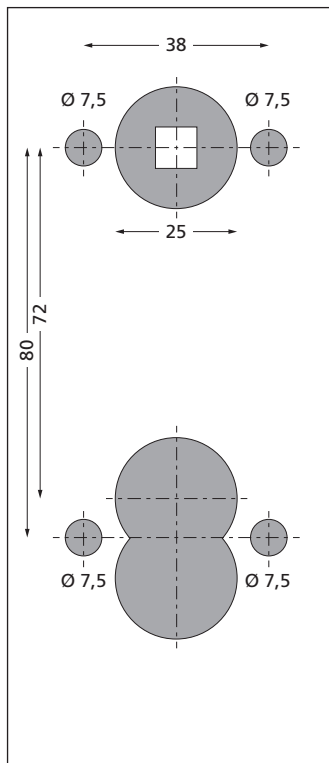
Use a drilling template for competent installation. (scoop article 000133)
The door handles are maintenance-free, tested and certified.



right

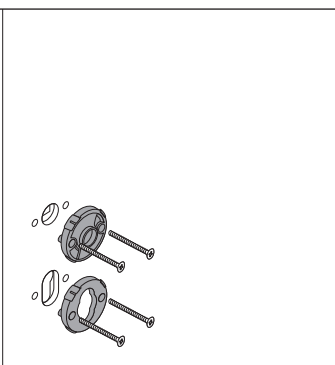
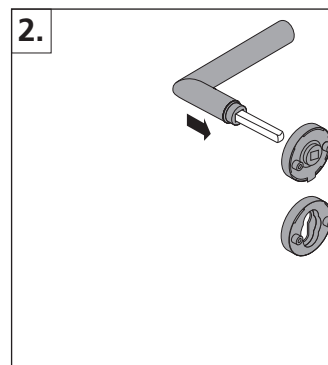
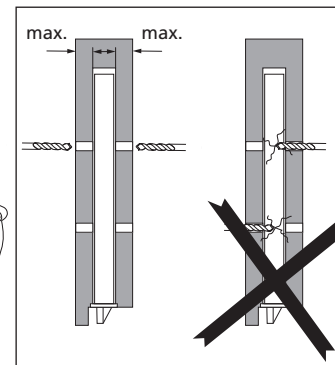
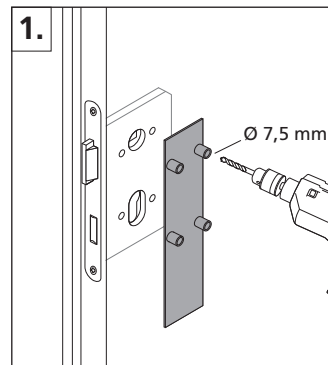


left



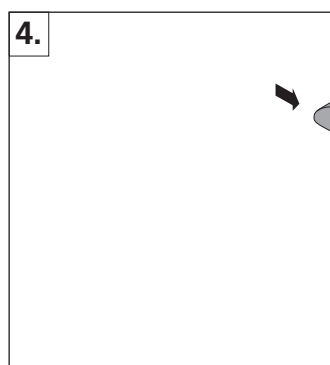
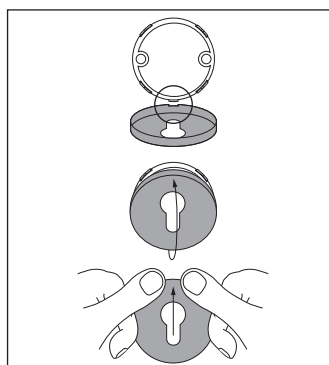
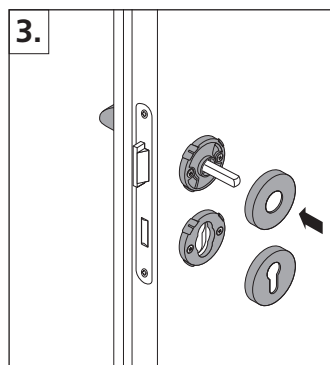
1. Align drilling template vertically.
! Attention ! Drill holes \varnothing 7,5 mm from each side precisely.
Don't drill through to avoid damaging the mortise lock!

2. **! Attention!** Follow **LEFT** and **RIGHT** sides of bases. Press the left base into the holes, push the handle with spindle through the base and the lock follower. Push the right base over the spindles until the supporting cams countersink into the drilled holes.
! Attention! Please note that not every door type in the lock area is equally stable. Tighten screws according to door type.



3. **! Attention !** The first step is to clip on the covering rosette (follow fixing position gap).

4. After that attach the handles, and press them together from both sides.



To dismantle, unlock the clamping mechanism from below with the enclosed tool and pull off the lever handle. Using a rosette lifter, unclip the covering rosettes from the bases.

